

# SELF-PROPELLED TELESCOPIC BOOMS | ENGINE-POWERED

## OUTSTANDING HORIZONTAL OUTREACH

Telescopic booms offer greater horizontal outreach than any other type of aerial platform — perfect for areas with limited access in construction and industrial applications. Genie® telescopic S™-booms are also designed for productivity with the traction and drive speed you need to get around the job site and to the work area. These models reach out horizontally between 31 ft 8 in (9.65 m) and 77 ft 5 in (23.60 m), with working heights of 46 ft (14.20 m) to 91 ft (27.90 m).

### GREAT FOR TIGHT SPACES

The 360° continuous rotation turntable rotates full circle for quick and flexible positioning. Minimal tailswing allows you to maneuver in tight work spaces.

### DUAL-FUEL ENGINE OPTIONS

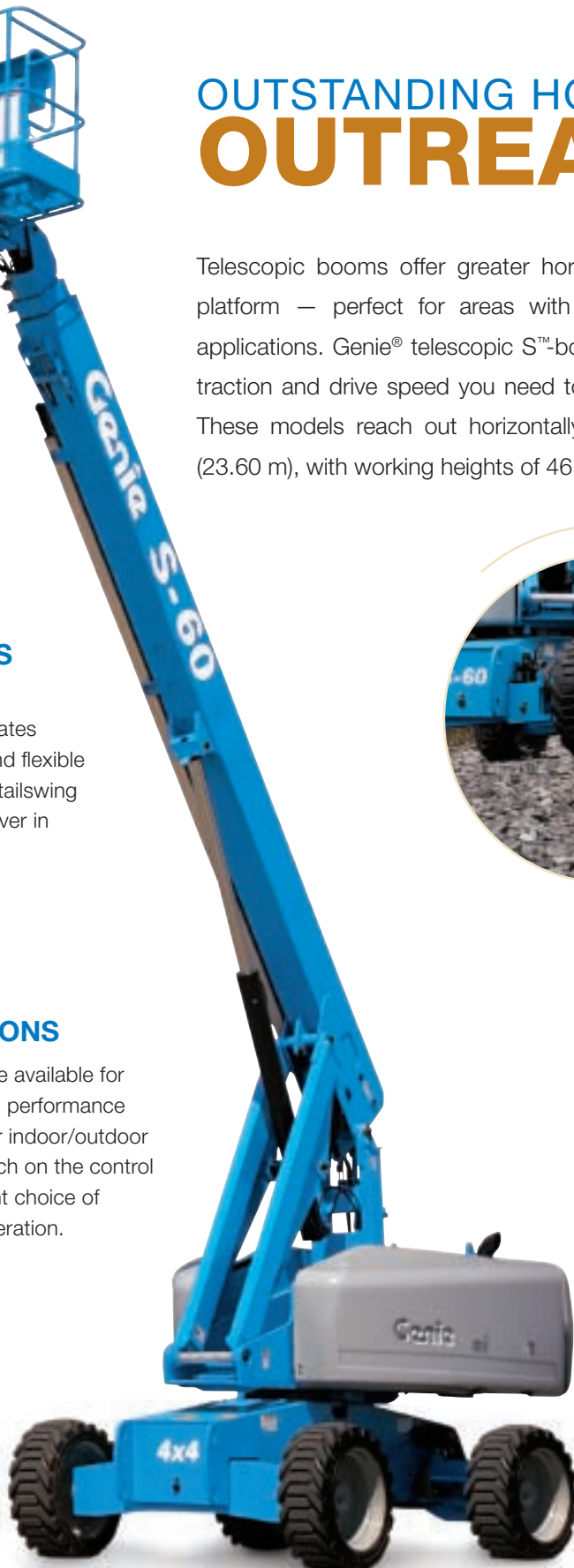
Dual-fuel options are available for reliable, on-demand performance with the flexibility for indoor/outdoor applications. A switch on the control panels allows instant choice of gasoline or LPG operation.



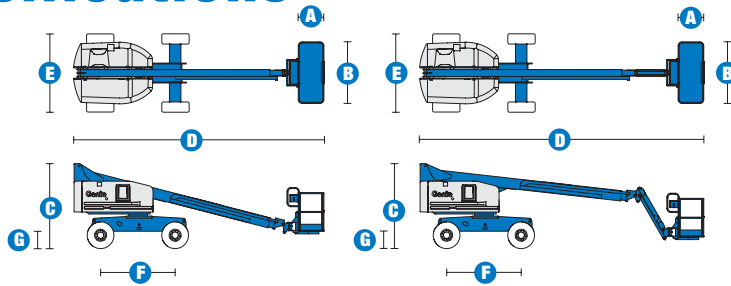
### OUTSTANDING TERRAINABILITY

A revolutionary patented system automatically senses the terrain and adjusts the axle position based on ground conditions. Positive traction drive maintains equal power to all drive wheels, even if one wheel loses traction in mud, snow or sand. And two- or four-wheel drive options make it easy to drive up loading ramps for transport.

**Genie's revolutionary patented active oscillation system automatically senses the terrain and adjusts the axle position based on ground conditions.**



# Specifications



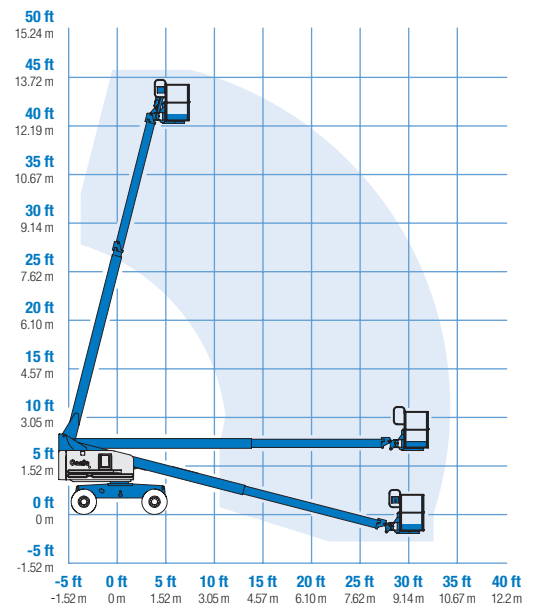
MODELS		S™-40	
MEASUREMENTS	US	Metric	
Working height maximum*	46 ft	14.20 m	
Platform height maximum	40 ft	12.20 m	
Horizontal reach maximum	31 ft 8 in	9.65 m	
Below ground reach	3 ft 2 in	.97 m	
<b>A</b> Platform length - 8 ft model	3 ft	.91 m	
Platform length - 6 ft model	2 ft 6 in	.76 m	
<b>B</b> Platform width - 8 ft model	8 ft	2.44 m	
Platform width - 6 ft model	6 ft	1.83 m	
<b>C</b> Height - stowed	8 ft 2 in	2.49 m	
<b>D</b> Length - stowed	24 ft 3 in	7.39 m	
- transport (jib tucked under)	_____	_____	
<b>E</b> Width (with standard tires)	7 ft 6 in	2.30 m	
<b>F</b> Wheelbase	7 ft 3 in	2.20 m	
<b>G</b> Ground clearance - center	1 ft .5 in	.32 m	

PRODUCTIVITY		
Lift capacity	500 lbs	227 kg
Platform rotation	160°	
Vertical jib rotation	_____	
Turntable rotation	360° continuous	
Turntable tailswing	2 ft 10 in	.86 m
Drive speed - stowed	4.8 mph	7.7 km/h
Drive speed - raised or extended	0.68 mph	1.1 km/h
Gradeability - 2WD - stowed**	30%	
Gradeability - 4WD - stowed**	40%	
Turning radius - inside	6 ft 8 in	2.0 m
Turning radius - outside	15 ft 8 in	4.78 m
Controls	12 V DC proportional	
Tires - RT lug	12-16.5 NHS	
Tires - ribbed (2WD front)	12.5 L - 16 SL	

POWER		
Auxiliary power unit	12 V DC	
Hydraulic tank capacity	45 gal	170 L
Fuel tank capacity	20 gal	76 L

WEIGHT***		
	11,650 lbs	5,284 kg

## RANGE OF MOTION S™-40



\* The metric equivalent of working height adds 2 m to platform height. U.S. adds 6 ft to platform height.  
 \*\* Gradeability applies to driving on slopes. See operator's manual for details regarding slope ratings.  
 \*\*\* Weight will vary depending on options and/or country standards.